

Music development plan summary: Sybil Andrews Academy

All schools should have a music development plan from academic year 2023-24. Schools are expected to publish a summary of their plan on their website from academic year 2024-25.

This template is designed to support schools to produce the summary. It should set out how the school will deliver high-quality music provision in curriculum music, co-curricular music and musical experiences, taking into account the key features in the [national plan for music education](#):

- timetabled curriculum music of at least one hour each week of the school year for key stages 1 to 3
- access to lessons across a range of instruments, and voice
- a school choir or vocal ensemble
- a school ensemble, band or group
- space for rehearsals and individual practice
- a termly school performance
- opportunity to enjoy live performance at least once a year

The summary should reflect your school's music provision for the given school year and your plans for subsequent years. It should also refer to any existing partnership with your local music hub or other music education organisations that supports the school with music provision.

Before publishing your completed summary, delete the advice in this template along with this text box.

Overview

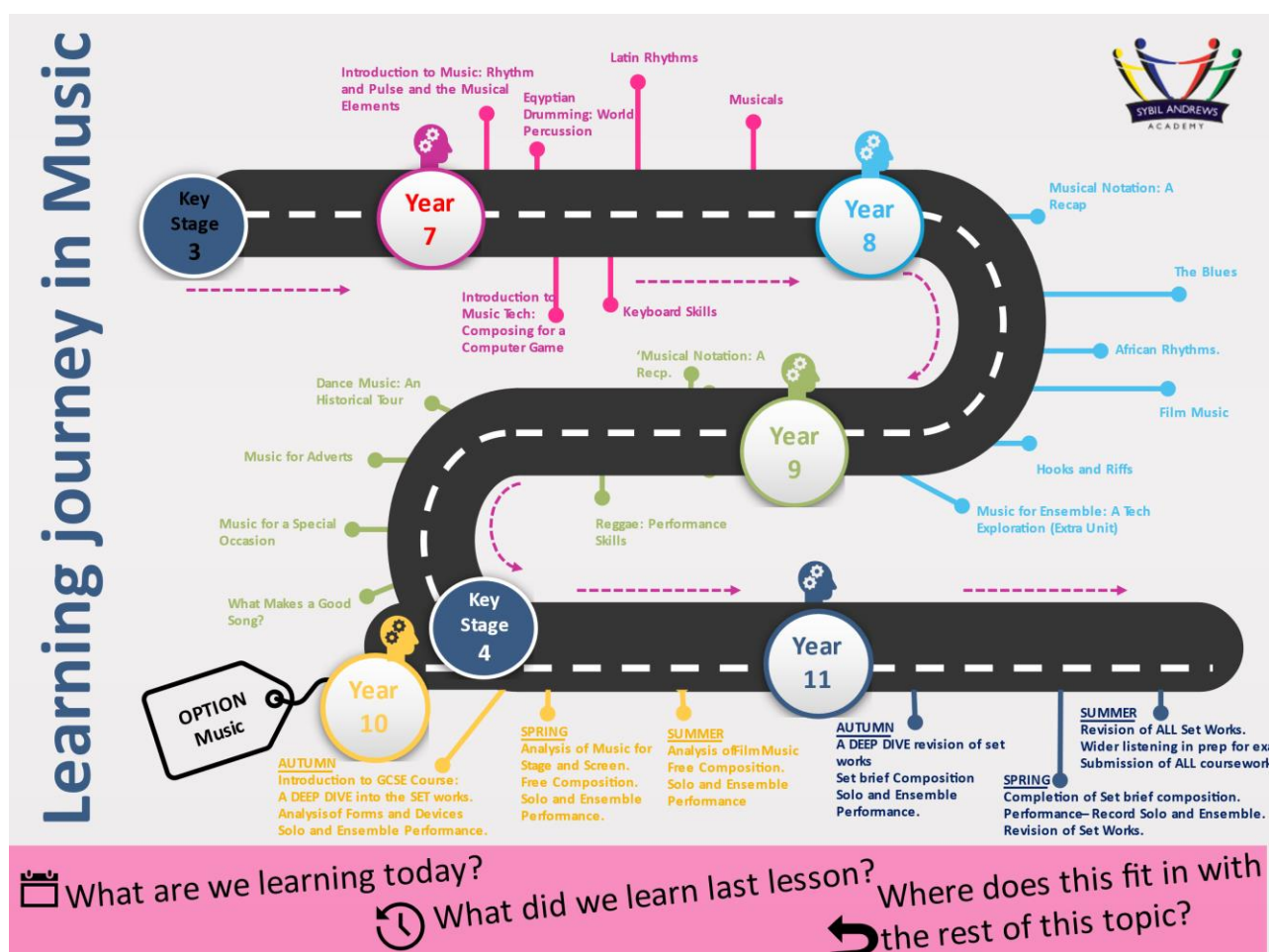
Detail	Information
Academic year that this summary covers	2024-2025
Date this summary was published	November 1 st 2024
Date this summary will be reviewed	September 1 st 2025
Name of the school music lead	Mrs S Hugill
Name of school leadership team member with responsibility for music (if different)	Mrs C Bergin
Name of local music hub	Suffolk County Music Services
Name of other music education organisation(s) (if partnership in place)	

This is a summary of how our school delivers music education to all our pupils across three areas – curriculum music, co-curricular provision and musical experiences – and what changes we are planning in future years. This information is to help pupils and parents or carers understand what our school offers and who we work with to support our pupils’ music education.

Part A: Curriculum music

This is about what we teach in lesson time, how much time is spent teaching music and any music qualifications or awards that pupils can achieve.

Our Music curriculum plan is below.



Music is allocated with one lesson per week for term across KS3 and 5 lessons over two weeks KS4.

Currently singing has a small role in KS3 Music study with it helping to develop understanding of rhythm and pulse, a cultural exploration through Egyptian Drumming and some singing elements in the What Makes a Good Song unit of study.

Students explore a variety of instrument playing across the year which is both through whole class ensemble teaching and more group based performances. In some units of study, students have the opportunity to pick which instrument they explore the unit of study in.

All students are able to participate in musical instrumental lessons on a selection of different instruments which is provided by our local Music Hub, Suffolk County Music. Students have individual lessons with a visiting tutor.

Through Music lessons students are able to study for Associated Board instrumental qualifications which in turn provide UCAS points for University. These can be studied in a variety of instruments and support clubs for Theory based qualifications are provided for students who wish to explore this side of the subject too.

At GCSE level, students study Eduqas which is a combination of Performance, Composition and Appraising elements.

Part B: Co-curricular music

This is about opportunities for pupils to sing and play music, outside of lesson time, including choirs, ensembles and bands, and how pupils can make progress in music beyond the core curriculum.

Music tuition is a priority at Sybil. Students have wide option of instrument and vocal lessons that is provided by our local hub Suffolk County Music. Visiting teachers offer one to one instrumental sessions for students. These lessons are in addition to what is studied within the classroom weekly. Through the scheme with Suffolk County Music, students are able to loan their instruments.

Each lunchtime there is a Music club where students are able to come and play together in a ensemble setting. These sessions allow students to work collaboratively with other instrumentalists what are outside of their own timetabled classes and year groups. The musical material that students create during these sessions are featured in performances throughout the school year.

There is currently a Musical Team that meets regularly throughout the week afterschool to rehearse for a production of Sound of Music. This again is a collaborative work with elements of Music, Dance and Drama.

Part C: Musical experiences

This is about all the other musical events and opportunities that we organise, such as singing in assembly, concerts and shows, and trips to professional concerts.

Students at Sybil are offered chances to perform throughout the year. Recently students were able to perform in the community with a Christmas Concert with the local church. There have been visits to local care homes where students are given the opportunity to perform for its residents and build the community connections.

Concerts and shows are important at Sybil and there have been a number of these across the year ranging from festive shows to Shakespeare medleys to our first Musical performance due to be performed in 2025. These events are open to all students across the school.

As a department, we are committed to offer a range of out of school trips that enable students to see music and theatre. These include an annual trip to the local theatre to see the Pantomime which mirrors the scheme of work for Drama. Trips to London theatre to see musicals are something we offer as often as we can and these have included visits to Wicked, Mamma Mia and Frozen. Again these trips are open to all students across the school and a pupil premium discount is offered to allow all students to be able to participate.

Moving forward this year is the introduction of interhouse competitions and the competition for the Music department is a week long Music Live Lounge where students will be able to perform songs/ instruments of their choice to an audience and earn points for their house.

Transition events have been introduced much earlier this year which has allowed our department to potentially recruit budding musicians to the school. This has also allowed our current students to be given the opportunity to experience some leader responsibilities in the subject and moving forward I would like to be able to offer this to more of our students.

In the future

This is about what the school is planning for subsequent years.

- To have an ever present culture of music in and around the school, with music heard regularly and enjoyed by all.
- Develop opportunities for careers in music.
- Develop opportunities for Trust wide networking and inter-Trust musical activities

How might we get there?

- Promotion of live music in assemblies and showcases.
- Support for peripatetic students in performance, with live opportunities.
- Develop relationships within the Trust.

- Add a Trust music event to next year's calendar

Further information (optional)

Use this space to provide any further information about your school's music development plan, including links to your local music hub partners, other local music education organisations and contacts.

The Department for Education publishes a [guide for parents and young people](#) on how they can get involved in music in and out of school, and where they can go to for support beyond the school.

Your local [music hub](#) should also have a local plan for music education in place from September 2024 that should include useful information.

If your school is part of a multi-academy trust with a trust-wide music development plan, you may also want to include a link to any published information on this plan.